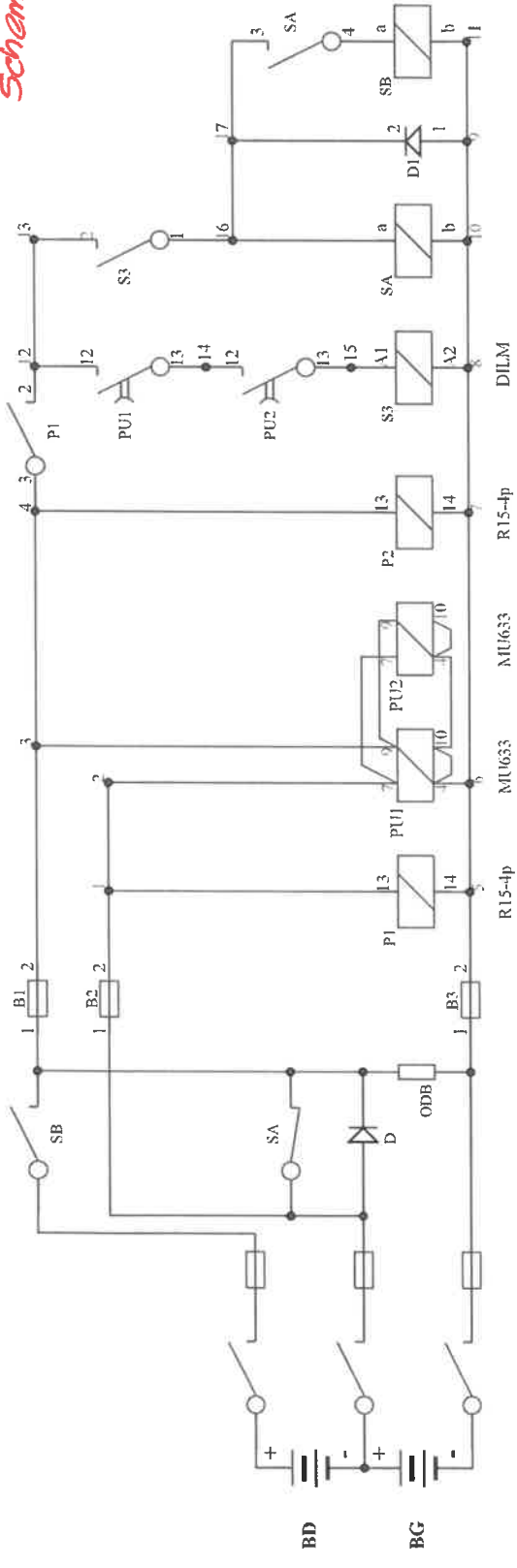
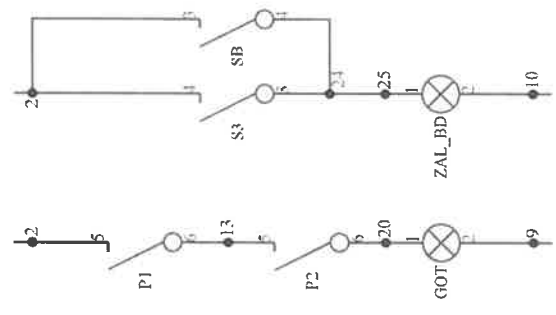


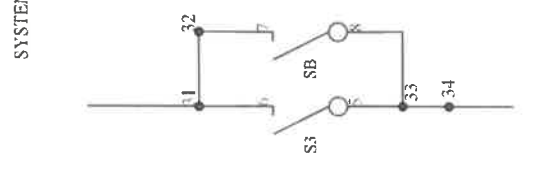
*Zakętnik nr 3 do S1412
Schemat przerzutki: RPS9*



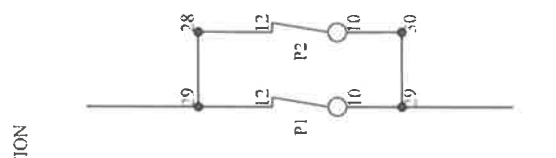
SYSTEM OVATION



GOTOWOŚĆ

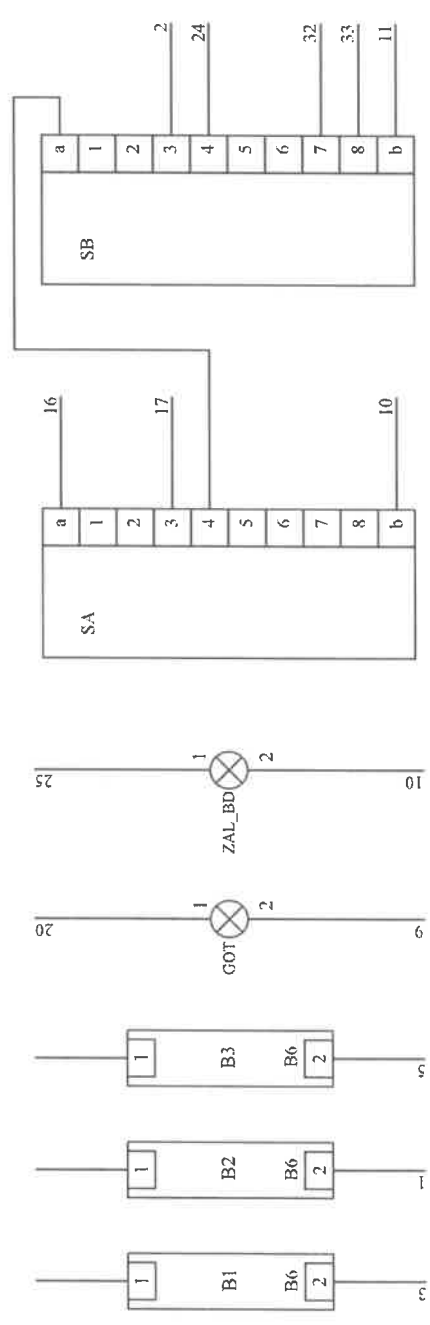
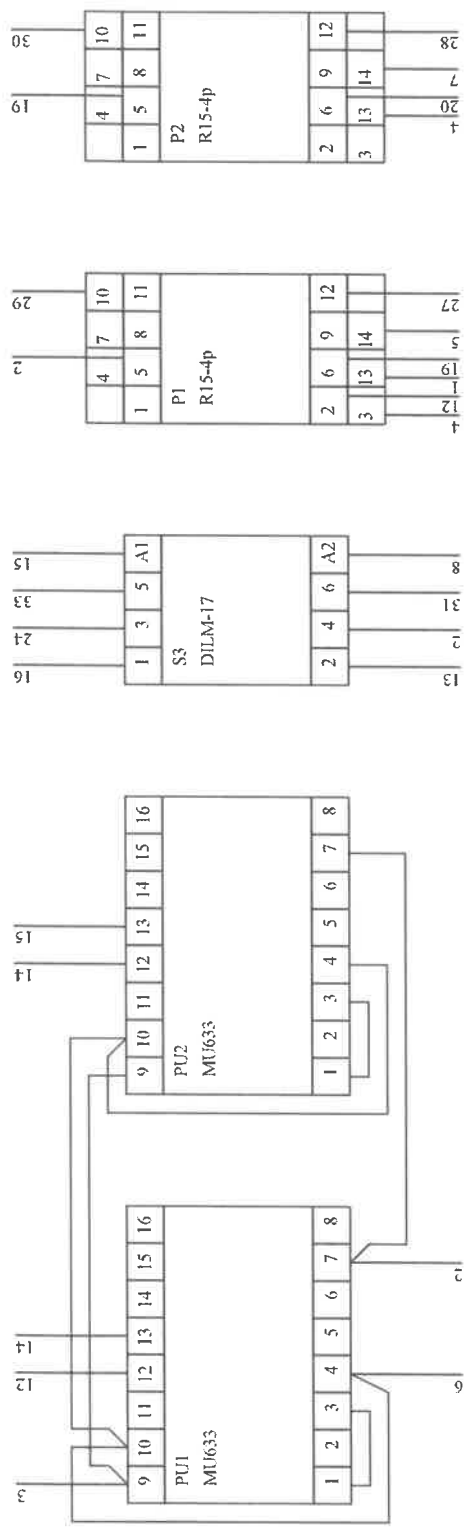


ZALĄCZENIE BATERII DOD.



ALARM OGÓLNY

RPS9
Przerzutka rozdzielni RPS6, RPS8, RPS02
rys. 1 z 3



RPS9
 Przerzutka rozdzielni RPS6, RPS8, RPS02
 rys. 2 z 3

RPS...-LP				
2	B2	1	P1	13
4	S3	2	PU1	7
3	SB	2	P1	5
2	B1	3	PU1	9
3	P1	4	P2	13
2	B3	5	P1	14
		6	PU1	4
		7	P2	14
		8	S3	A2
1	D1	9	GOT	2
b	SA	10	ZAL_BD	2
b	SB	11		
2	P1	12	PU1	12
		13	S3	2
13	PU1	14	PU2	12
A1	S3	15	PU2	13
a	SA	16	S3	1
2	D1	17	SA	3
		18		
5	P2	19	P1	6
6	P2	20	GOT	1
		21		
		22		
		23		
4	SB	24	S3	3
		25	ZAL_BD	1
		26		
		27	P1	12
20	-X	28	P2	12
21	-X	29	P1	10
		30	P2	10
16	-X	31	S3	6
7	SB	32		
8	SB	33	S3	5
17	-X	34		
		35		
		36		

UWAGA: W rozdzielni RPS02 połączenie z listwą -X (zaciski na -LS: 28, 29, 31, 34) nie istnieje.